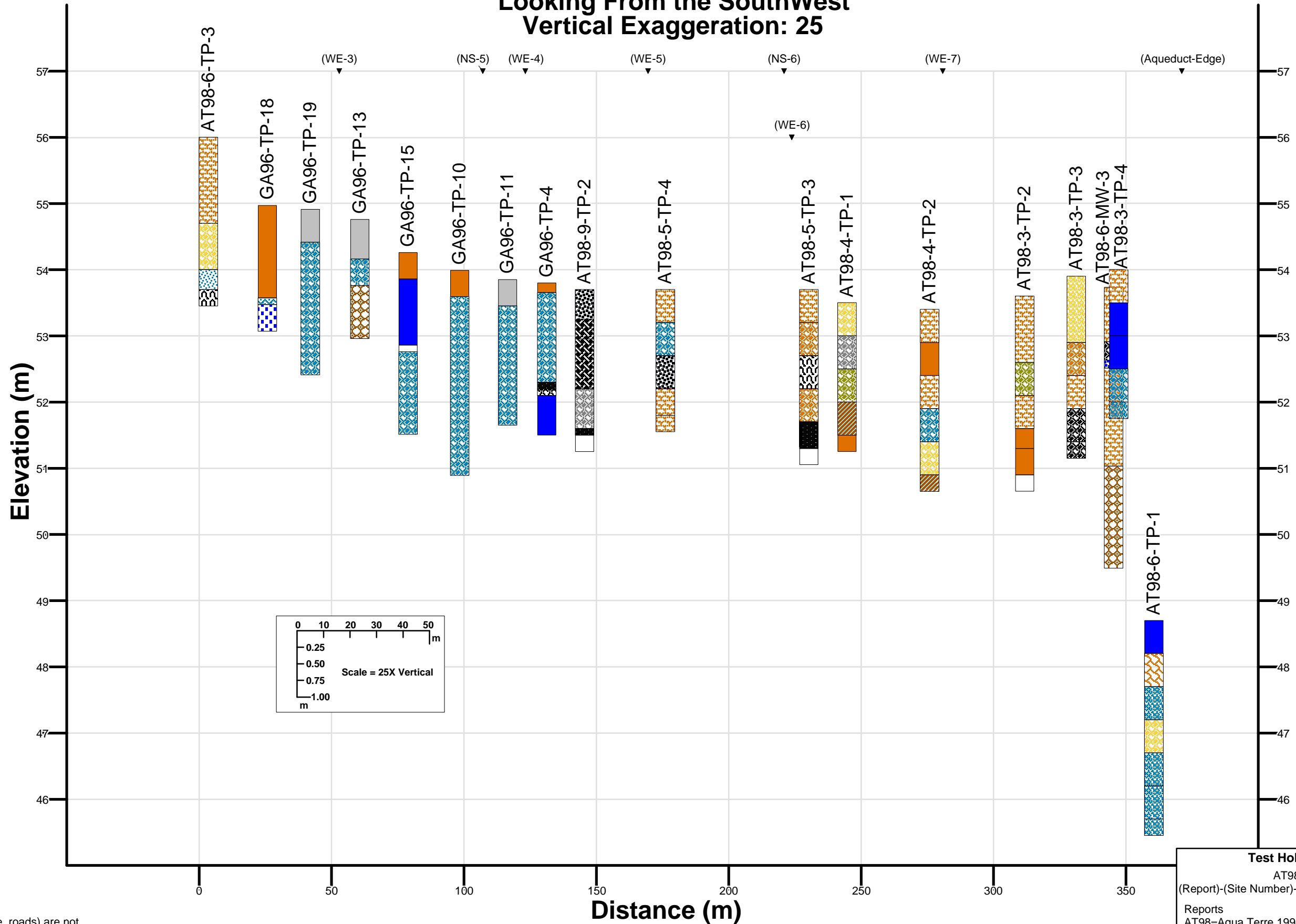


Section Duke Street NorthEast 2  
Looking From the SouthWest  
Vertical Exaggeration: 25



- Notes
1. Intersecting features (ie. roads) are not shown at true elevations.
  2. Test hole information is derived from the original reports.

| Test Hole Naming Convention                                |                    |
|--|--------------------|
| AT98 - 28 - TP - 10  |                    |
| (Report)-(Site Number)-(Test Hole Type)-(Test Hole Number) |                    |
| Reports  | Test Hole Types    |
| AT98=Aqua Terre 1998                                       | TP=Test Pit        |
| JW92=Jacques Whitford 1992                                 | BH=Bore Hole       |
| GA96=Golder Associates 1996                                | MW=Monitoring Well |
| GA93=Golder Associates 1993                                |                    |